



Mediterráneo's Steel Towers model MTS have been especially designed to integrate long-range rotating beacons c/w their solar power supply system.

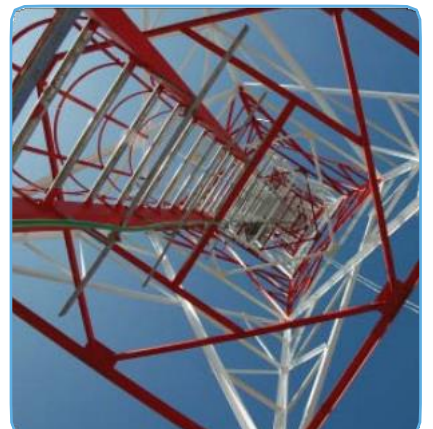
These towers are manufactured from hot-dip galvanized steel. Although standard heights are 20, 30 and 40 metres, we can also designed and supply any height under customer's request.

MTS towers are engineered and developed under the most restrictive safety standards. Provided the spacious size of the top platform, it is possible to hold a high number of solar modules, batteries and other accessories.

MSM bears in mind the difficult access to places where they will be installed; so we take special care of this factor in our designs by making all our towers modular.

FEATURES

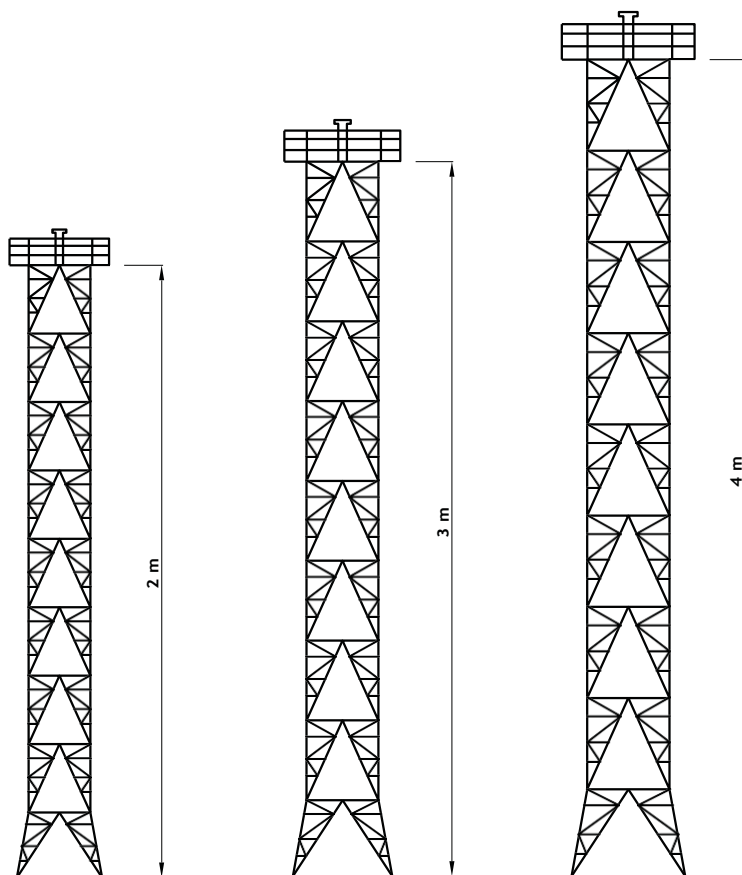
- √ Heights from 20 to 40 metres.
- √ Hot-dip galvanized steel. Corrosion resistant.
- √ Easy assembly due to its modular architecture.
- √ 42 ST steel profiles according to European Standards.
- √ Restricted access to top platform, with safety lock.
- √ Fast erection without crane. Provided with templates for the accurate anchor bolt positioning.
- √ Spacious sized top platform to hold a high number of solar modules and batteries.
- √ Wind-speed resistance up to 200 Kph.
- √ Access ladder with protection handrail.
- √ High-resistance bolting.
- √ Plates to fix electric conductor, if necessary.



STEEL TOWERS MTS



Specifications subject to change without previous notice.



Options

Supports for solar modules and battery cabinet on the top platform.

Lightning protection system.

Day marks.

Radar reflector.

Marine quality paint.

Housing for diesel generator at the tower base.

Piece-lifting manual system for tower erection.

Other heights available under request.

MODEL	MATERIAL	FOCAL HEIGHT	TOP BASE	WIND SPEED	WEIGHT
MTS 200	Hot-dip galvanised steel	21.5 m	9.00 m ²	200 kph	8,790 kg
MTS 300	Hot-dip galvanised steel	31.5 m	12.25 m ²	200 kph	11,050 kg
MTS 400	Hot-dip galvanised steel	41.5 m	16.00 m ²	200 kph	14,280 kg